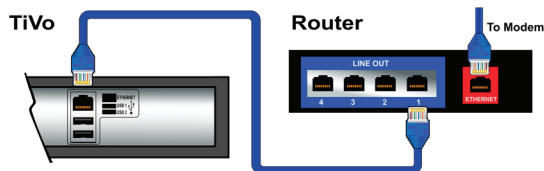


STEP 4

Connecting Your TiVo to the Internet

Ethernet Connection

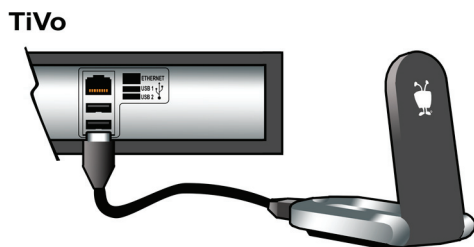
Connect one end of the Ethernet cable to one of the many line outputs of your router. Connect the other end of the Ethernet cable to the back of the TiVo box Ethernet input.



OR

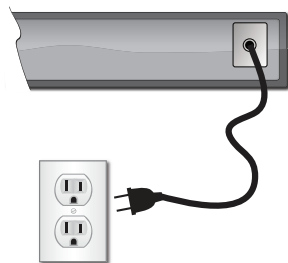
Wireless Adapter

Connect the wireless adapter into one of the USB ports on the back of your TiVo box.



STEP 5

Connect the power supply cord into the back of your TiVo box, then plug the other end into an electrical outlet. Ensure a wall light switch does not control the outlet. If it does, set the switch to the "ON" position.



STEP 6

Turn on the television with the TV remote. Press the Input or Source button to select the correct input, depending on which cable you installed in the previous steps. The TiVo Welcome Starting Up screen will appear.

Please Note: In order for your installation to be successful, you must install ALL converter boxes that are not yet connected. Follow the previous steps for the other converter boxes included in your order before continuing to the next step.

STEP 7

You are now ready to activate your RCN converter box. To ensure proper account setup and optimum RCN TiVo service, follow the instructions on your packing slip.

Congratulations! You now have endless entertainment possibilities.

If you have any questions with your installation, please go to www.rcn.com/help or call 1-866-TECH-RCN (832-4726).



TiVo® Premiere



WELCOME TO RCN

TiVo® SELF INSTALLATION GUIDE

You are about to experience a whole new way to enjoy Digital TV with TiVo provided by RCN.



1.800.RING.RCN | rcn.com

TiVo and the TiVo logo are trademarks or registered trademarks of TiVo Inc. or its subsidiaries worldwide. All other trademarks are the property of their respective owners. © 2012 RCN Telecom Services, LLC.



ENTERTAINMENT REDEFINED

INSTALLING YOUR TiVo® PREMIERE

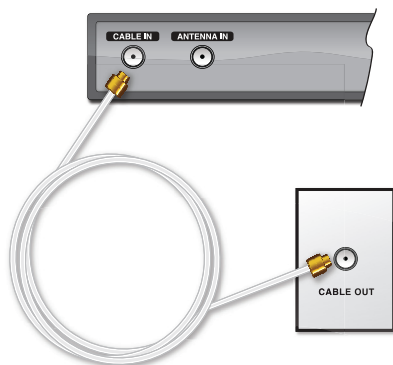
You are about to experience the best of TV and the web with the one box that does it all—TiVo Premiere, provided by RCN. Let's get you connected to endless entertainment possibilities.

STEP 1

Connecting your Digital TV to the TiVo box (A. Wall Outlet or B. Open Cable Wire)

A. Wall Outlet

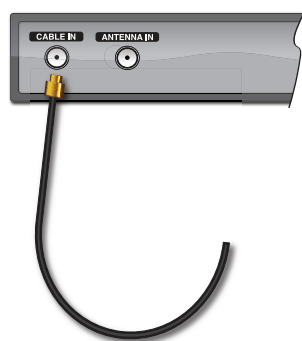
Connect one end of the coaxial cable to the wall outlet and the other end to the Cable connection on the back of the RCN converter box.



B. Open Cable Wire

(This wire could be coming out of the floorboard, window, etc)

Connect the open cable to the "Cable In" (or "RF IN") connection on the back of the RCN converter box.



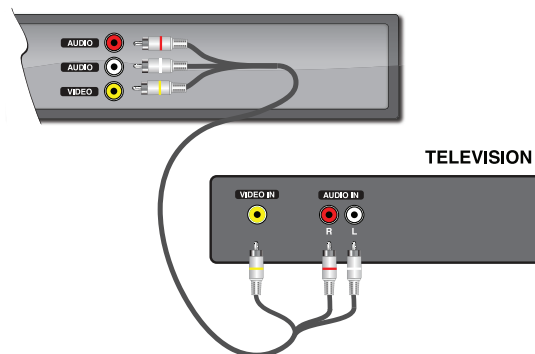
If you are connecting to a HD television, please proceed to step 3.

STEP 2

Connecting your TiVo box to Standard Definition TV

Connect one end of the red and white tipped cables into the corresponding audio inputs on the back of the TiVo box.

Connect the yellow tipped cable into the corresponding video input on the back of the TiVo box.



Connect the other end of the red and white tipped cables into the corresponding "Audio In" ports on the back of the television.

Connect the other end of the yellow tipped cable into the "Video In" input on the back of the television.

Please proceed to step 4.

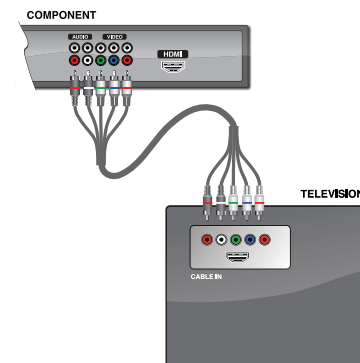
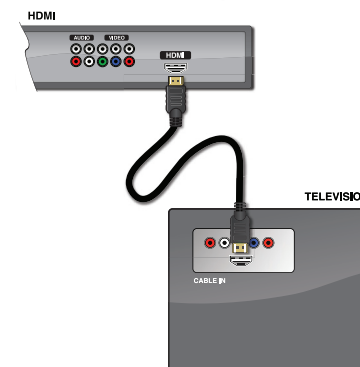
STEP 3

Connecting Your TiVo Box to your TV (HDMI or Component Cabling)

HDMI

Connect one end of the HDMI cable into the HDMI connection on the back of the TiVo box. Connect the other end of the HDMI cable into the HDMI

connection on the back of your TV.



OR

High Definition Component Cable

Audio: Connect the black tip with red band into the audio output connection marked "R" and connect the black tip with white band into the audio output connection marked "L" on the back of the TiVo box.

Video: Connect the remaining cables into the corresponding RGB (Red, Green, Blue) video output connections on the back of the TiVo box.

Connect the other end of the component cable as follows:

Audio: Connect the black tip with red band into the audio input connection marked "R" and connect the black tip with white band into the audio input connection marked "L" on the back of your TV.

Video: Connect the remaining cables on that end into the corresponding RGB (Red, Green, Blue) video input connections on the back of your TV.